



WELLXTROL®

Next Generation Well Tanks &
Constant Pressure Systems



Well Above The Rest®



WELLXTROL®

AMTROL Inc. has a long tradition of innovative product design, uncompromisingly high quality and outstanding customer service. Well-X-Trol has been the industry's most trusted brand of well tanks for over 45 years. Today, AMTROL is proud to introduce the Next Generation of well tanks featuring higher performance and the industry's only 7 year warranty. All Well-X-Trol tanks are Made in the USA at our ISO 9001:2008 registered facilities. The Best Just Got Better.

1946 American Tube Products founded in West Warwick, Rhode Island

1954 Invented the diaphragm expansion tank

1963 Invented the pre-pressurized well tank

1967 Invented the refrigerant gas cylinder

1980 Invented the indirect fired water heater

1991 Invented the thermal expansion tank

1992 AMTROL registered ISO 9001

2003 AMTROL registered ISO 9001:2000

2005 Invented composite metal LP tank

2008 Introduced Well-X1® Constant Pressure System

2009 AMTROL registered ISO 9001:2008

2010 Introduced the Next Generation Well-X-Trol®

20 millionth well tank shipped

1 millionth composite metal tank shipped



The Best Just Got Better.

NEW The Industry's Longest Warranty: 7 Years

- Installer research identified the desire for a longer warranty.
- Required a redesign that included a number of product enhancements.

Projection Welded Air Valve

- Eliminates threaded valve leak paths.
- Tamper-evident warning label for added safety.

NEW High Strength Steel (HSS) Construction

- Deep-drawn dome for double the strength of rolled steel.
- Multi-dome construction for internal bracing.

Positive Hoop Ring and Groove Seal

- Secures diaphragm and liner for added strength and reliability.
- Exclusive welding process eliminates interior rough spots and sharp edges that can damage the diaphragm and liner.

Seamless Heavy Duty Butyl Diaphragm

- The Industry's thickest diaphragm for extra strength and flexibility.
- Conforms exactly to the shell without stretching, creasing or forming bubbles that could trap water or sediment.
- Meets stringent FDA requirements for potable water.

Polypropylene Tank Liner

- Provides 100% corrosion resistant, non-metallic water reservoir.
- NSF® International Standard 61 listed for clean, safe water storage with no taste or odor.

Stainless Steel System Connection

- Withstands aggressive water conditions.

NEW Turbulator™ Water Circulation Device

- Patent pending design agitates water as it enters tank.
- Helps reduce sediment build-up and extends tank life.

NEW Best-in-Class 150 psig Pressure Rating

- 20% higher working pressure performance.
- Each tank is pressure tested for added safety.
- Pre-pressurized to the most common pump cut-in pressure.

NEW Tuf-Kote™ HG Indoor/Outdoor Coating Technology

- Now standard on all models in AMTROL blue, tan or gray.
- Stands up to the most severe environments.

NEW DuraBase™ Composite Tank Stand

- Patent pending design is engineered for strength; allows tank to be rolled into place.
- UV resistant material is rugged and will never corrode.
- Available separately as a spacer for Well-X-Trol® models.



Dome



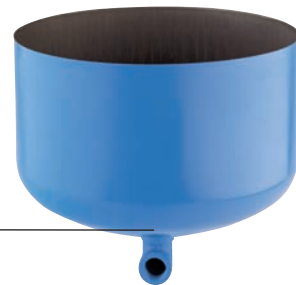
Hoop



Butyl Diaphragm



Polypropylene Liner



Dome



Turbulator™

Stainless Steel Connection with optional Pro Access®



DuraBase™ Composite Stand



Tank Base Options

Steel Stand with Protective Edging

In-Line Models



Model No.	Dimensions		Total Volume (gals)	Max. Accept. Factor	System Drawdown			Shipping Wt. (Vol.) lbs (cu ft)
	Diameter (ins)	Height (ins)			20/40 (gals)	30/50 (gals)	40/60 (gals)	
WX-101	8	12 5/8	2.0	0.45	.8	.7	.6	5 (0.6)
WX-102	11	15	4.4	0.55	1.8	1.5	1.3	9 (1.2)
WX-103	11	22 1/4	7.6	0.42	3.1	2.6	2.2	15 (1.8)
WX-104	15 3/8	17 3/4	10.3	1.00	4.1	3.5	3.0	20 (2.6)
WX-200	15 3/8	22	14.0	0.81	5.6	4.8	4.1	22 (3.3)

Precharge Pressure for WX-101, WX-102 & WX-103 is 38 PSIG and Sys. Conn. is 3/4" NPTM.
 Precharge Pressure for WX-104 and WX-200 is 38 PSIG and Sys. Conn. is 1" NPTM.
 Maximum Working Pressure is 150 PSIG and Maximum Working Temperature is 200° F.

Stand Models



Model No.	Dimensions		Total Volume (gals)	Max. Accept. Factor	System Drawdown			Shipping Wt. (Vol.) lbs (cu ft)
	Diameter (ins)	Height (ins)			20/40 (gals)	30/50 (gals)	40/60 (gals)	
WX-201	15 3/8	25 1/8	14.0	0.81	5.6	4.8	4.1	25 (3.8)
WX-202	15 3/8	31 5/8	20.0	0.57	8.0	6.8	5.9	33 (4.9)
WX-202XL	15 3/8	38 1/4	26.0	0.44	10.5	8.8	7.6	36 (5.2)
WX-203	15 3/8	46 1/2	32.0	0.35	—	10.9	9.4	43 (7.0)
WX-205	22	29 5/8	34.0	1.00	13.7	11.6	10.0	61 (9.5)
WX-250	22	36	44.0	0.77	17.7	15.0	12.9	69 (11.0)
WX-251	22	46 3/4	62.0	0.55	24.9	21.1	18.2	92 (13.9)
WX-255	22	56 3/8	81.0	0.41	32.6	27.5	23.8	103 (15.8)
WX-252	22	62 1/4	86.0	0.39	34.6	29.2	25.3	114 (18.1)
WX-302	26	47 1/4	86.0	0.54	34.6	29.2	25.3	123 (18.9)
WX-350	26	61 7/8	119.0	0.39	43.6	40.5	35	166 (24.5)

Precharge Pressure for WX-201 thru WX-203 is 38 PSIG and Sys. Conn. is 1" NPTF.
 Precharge Pressure for WX-205 thru WX-350 is 38 PSIG and Sys. Conn. is 1 1/4" NPTF.
 Maximum Working Temperature is 200° F.
 Maximum Working Pressure for all models is 150 PSIG except WX-252.
 Maximum Working Pressure for WX-252 is 100 PSIG.
 All models except WX-201 and WX-252 are available with Pro Access®. Use suffix PA.
 All models except WX-252 are available with DuraBase™. Use suffix D.
 Pro Access® not available with DuraBase™.

Underground Models



Model No.	Dimensions		Total Volume (gals)	Max. Accept. Factor	System Drawdown			Shipping Wt. (Vol.) lbs (cu ft)
	Diameter (ins)	Height (ins)			20/40 (gals)	30/50 (gals)	40/60 (gals)	
WX-200-UG	15 3/8	22	14.0	0.81	5.6	4.8	4.1	22 (3.8)
WX-202-UG	15 3/8	30	20.0	0.57	8.0	6.8	5.9	30 (4.9)
WX-250-UG	22	33 3/8	44.0	0.77	17.7	15.0	13.0	60 (9.8)
WX-251-UG	22	44 1/8	62.0	0.55	24.9	21.1	15.3	83 (13.9)

Precharge Pressure for WX-200-UG and WX-202-UG is 38 PSIG and Sys. Conn. is 1" NPTF Coupling.
 Precharge Pressure for WX-250-UG and WX-251-UG is 38 PSIG and Sys. Conn. is 1 1/4" NPTF Coupling.
 Maximum Working Pressure is 150 PSIG and Maximum Working Temperature is 200° F.

Model Specifications & Sizing

Wall Hung Model

Model No.	Height (ins)	Dimensions		Total Length (ins)	Max. Volume (gals)	System Drawdown	20/40 (gals)	30/50 (gals)	40/60 (gals)	Shipping Wt. (Vol.) lbs (cu ft)
		Width (ins)	Length (ins)							
WX-102-VFD	12 1/16	11	15 5/16	4.4	0.55	1.8	1.5	1.3	13 (1.4)	

Precharge Pressure is 38 PSIG.
 Maximum Working Pressure is 150 PSIG and Maximum Working Temperature is 200° F.
 WX-202-VFD includes Universal Mounting Bracket.



Pump Stand Models

Model No.	Height (ins)	Dimensions		Total Volume (gals)	Max. Accept. Factor	System Drawdown			Shipping Wt. (Vol.) lbs (cu ft)
		Width (ins)	Length (ins)			20/40 (gals)	30/50 (gals)	40/60 (gals)	
WX-102-PS	12 1/16	11	15 5/16	4.4	0.55	1.8	1.5	1.3	13 (1.4)
WX-105-PS	11	10 1/2	18 1/4	5.3	0.80	2.1	1.8	1.6	13 (1.5)
WX-110-PS	12 1/8	11	20 9/16	7.4	0.43	2.7	2.3	1.9	15 (2.0)
WX-200-PS	15 3/8	15 3/8	20 7/8	14.0	0.81	5.6	4.8	4.1	29 (4.0)
WX-202-PS	16	15 3/8	27 13/16	20.0	0.57	8.0	6.8	5.9	33.5 (4.9)

Precharge Pressure is 38 PSIG for all models.
 Maximum Working Pressure is 150 PSIG and Maximum Working Temperature is 200° F.



Horizontal Model

Model No.	Height (ins)	Dimensions		Total Volume (gals)	Max. Accept. Factor	System Drawdown			Shipping Wt. (Vol.) lbs (cu ft)
		Width (ins)	Length (ins)			20/40 (gals)	30/50 (gals)	40/60 (gals)	
WX-202-H	28 5/8	15 3/8	15 1/4	20.0	0.57	8.0	6.8	5.9	33 (4.9)

Precharge Pressure is 38 PSIG. System connection is 1" NPTF (straight coupling connection).
 Maximum Working Pressure is 150 PSIG. Maximum Working Temperature is 200° F.



Sizing: Choose the amount of system protection you need.

The Effective System Protection (ESP) sizing procedure covers modern residential water-use habits, heavy demands and the general increase in water use that has occurred in recent years. ESP sizing is designed to reduce pump and tank wear and tear, and reduce energy consumption by keeping pump starts to a minimum.

ESP Sizing Table						
PUMP DISCHARGE RATE GPM (Approx.)	ESP I			ESP II		
	30/50 psig	40/60 psig	50/70 psig	30/50 psig	40/60 psig	50/70 psig
5	WX-202	WX-202	WX-202	WX-205	WX-205	WX-250
7	WX-202XL	WX-203	WX-203	WX-250	WX-251	WX-251
10	WX-205	WX-205	WX-250	WX-251	WX-255	WX-302
12	WX-250	WX-250	WX-251	WX-255	WX-255	WX-350
15	WX-250	WX-251	WX-251	WX-302	WX-350	WX-350
20	WX-251	WX-255	WX-302	WX-350	(2) WX-255	(2) WX-302
25	WX-255	WX-302	WX-350	(2) WX-255	(2) WX-302	(2) WX-350
30	WX-302	WX-350	W-350	(2) WX-302	(2) WX-350	(3) WX-302
35	WX-350	WX-350	(2) WX-255	(2) WX-350	(2) WX-350	(3) WX-350
40	WX-350	(2) WX-255	(2) WX-302	(2) WX-350	(3) WX-302	(3) WX-350

Larger Tank = Fewer Tank Cycles for Longer Tank and Pump Life

Effective System Protection I: The tank selection is based on approximately one minute running time. This is recommended for pumps up to 3/4 hp.
 Effective System Protection II: The tank selection is based on approximately two minutes running time. This is recommended for pumps 3/4 hp or larger.

The Well-X1 system combines city-like water pressure utilizing an existing pump. It's the perfect alternative to complicated, expensive and difficult to install VFD systems. Pre-assembled and ready-to-run, it's the ultimate combination of quality, savings and performance.



The VFD Alternative

- City-like water pressure from existing submersible or jet pumps.
- Maintains 10 psig differential for smooth, consistent flow.
- Pump does not run constantly which saves energy.

Well-X-Trol Well Tank

- Features include high strength steel, 150 psig, Tuf-Kote™ HG, Turbulator and DuraBase stand.
- Provides supplemental storage for peak demands.
- 7 year warranty.



Guardian CP™ Digital Control

- Digital pressure gauge. Adjustable up to 80 psig.
- Real time system diagnostics.
- 2 year warranty.

Fast, Easy Installation

- Simple 4-wire setup.
- Auto adjusts to 115 or 230 VAC.
- Remains idle if wired improperly.
- Pre-assembled with:
 - Guardian CP Control
 - Compression Fittings
 - Decorative Cap
 - Relief Valve
 - Mounting Bracket
 - Drain Assembly
 - Brass Tank Tee
 - Press Sleeves
 - Copper Tubing



Pump Protection



RAPID CYCLE:

Alerts user before pump damage occurs.



LOW WATER CUTOFF:

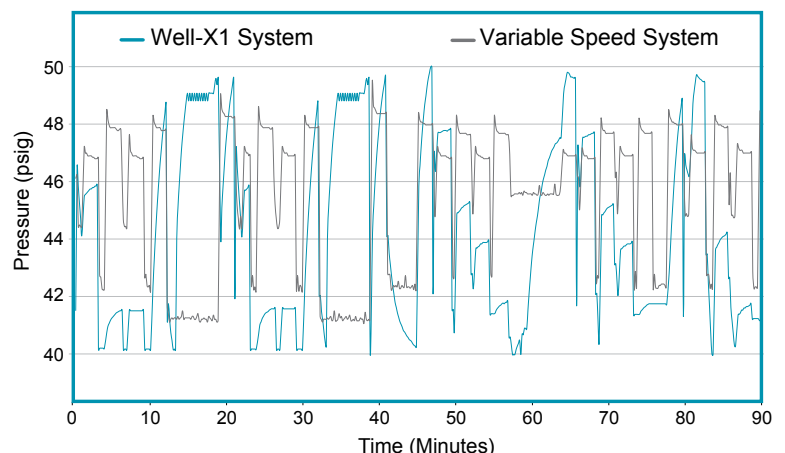
Shuts off pump when below 10 psig; automatically restarts every 60 minutes.



IMPROPER VOLTAGE:

Shuts off pump; automatically restarts with proper voltage.

Comparable Pressure Performance



1. Well-X1 System: Guardian CP set at 40/50 psig with 1/2 HP submersible pump and 44 gal. well tank.
2. Variable Speed System: 3/4 Variable Speed pump set at 47 psig with a 2 gal. in line tank.

The Simple Solution.

Specifications

Model	Volume (Gallons)	Height (Inches)	Diameter (Inches)	Weight (lbs.)	Voltage (VAC)	Max. Pump Horsepower	Relief Valve (Included)	Pressure Range	Differential Range
WX1-250	44	44	22	80	115/230	2	100 psig	10-80 psig	10-55 psig
WX1-251	62	54 3/4	22	103	115/230	2	100 psig	10-80 psig	10-55 psig
WX1-302	86	55 1/4	26	134	115/230	2	100 psig	10-80 psig	10-55 psig

All models: Water Connections 1" NPTF and 1-1/4" NPTM

System Drawdown (Gallons)

MODEL	STANDARD DIFFERENTIAL				CONSTANT PRESSURE MODE			
	Pressure Range (cut-in/cut-out in psig)				Pressure Range (cut-in/cut-out in psig)			
	30/50	40/60	50/70	60/80	40/50	50/60	60/70	70/80
WX1-250	15.0	13.0	11.4	10.1	8.4	7.0	6.2	5.7
WX1-251	21.1	18.3	16.1	14.4	11.8	9.9	8.7	8.1
WX1-302	29.2	25.4	22.4	20.0	16.3	13.8	12.0	11.2

WELL-X1® Sizing

TRADITIONAL SUBMERSIBLE PUMP INSTALLATION										JET PUMP SYSTEMS					
20 psig differential					10 psig differential					10 psig differential					
Pressure Range (cut-in/cut-out)					Pressure Range (cut-in/cut-out)					Pressure Range (cut-in/cut-out)					
	30/50	40/60	50/70	60/80	40/50	50/60	60/70	70/80		20/30	30/40	40/50	50/60		
PUMP GPM	10	WX1-250	WX1-250	WX1-250	WX1-250	5	-	-	WX1-250	WX1-250	5	WX1-250	WX1-250	WX1-250	WX1-250
	12	WX1-250	WX1-250	WX1-251	WX1-251	7	WX1-250	WX1-250	WX1-251	WX1-251	6	WX1-250	WX1-250	WX1-250	WX1-250
	15	WX1-251	WX1-251	WX1-251	WX1-302	10	WX1-251	WX1-251	WX1-302	WX1-302					
	18	WX1-251	WX1-302	WX1-302	WX1-302	12	WX1-251	WX1-302	WX1-302	WX1-302					
	20	WX1-251	WX1-302	WX1-302	WX1-251	15	WX1-302	WX1-302	-	-					



Well Above The Rest®

Not all well tanks are created equal and we can prove it. The Amtrol Tanks on Tour™ mobile education center is traveling throughout the United States and Canada demonstrating the very real differences that make Well-X-Trol® *Well Above The Rest*®. All models are Amtrol Rewards™ eligible. Visit www.amtrolrewards.com



AMTROL Tanks on Tour™ mobile education center.



1400 Division Road, West Warwick, RI USA 02893 T: 401.884.6300
www.amtrol.com